

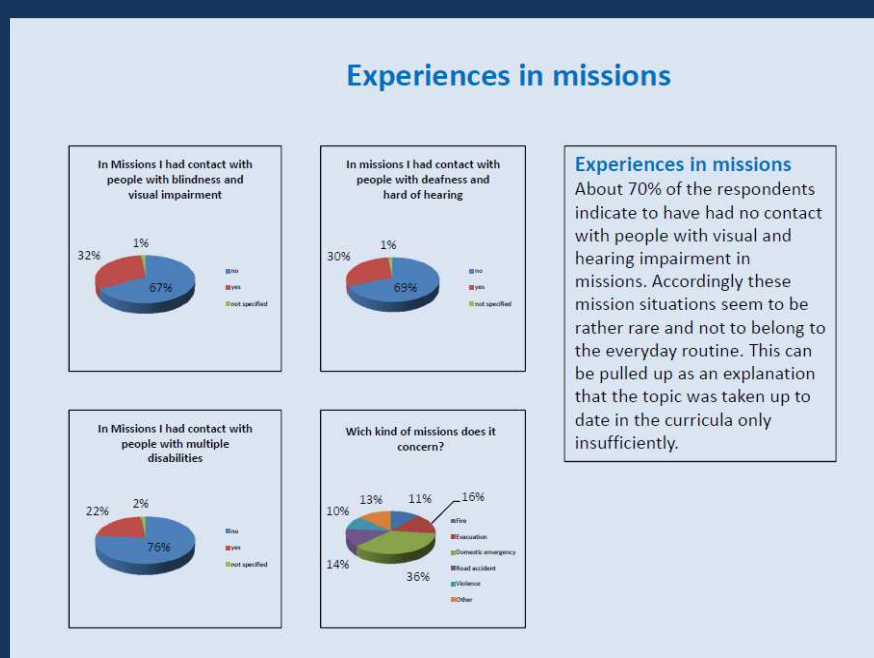
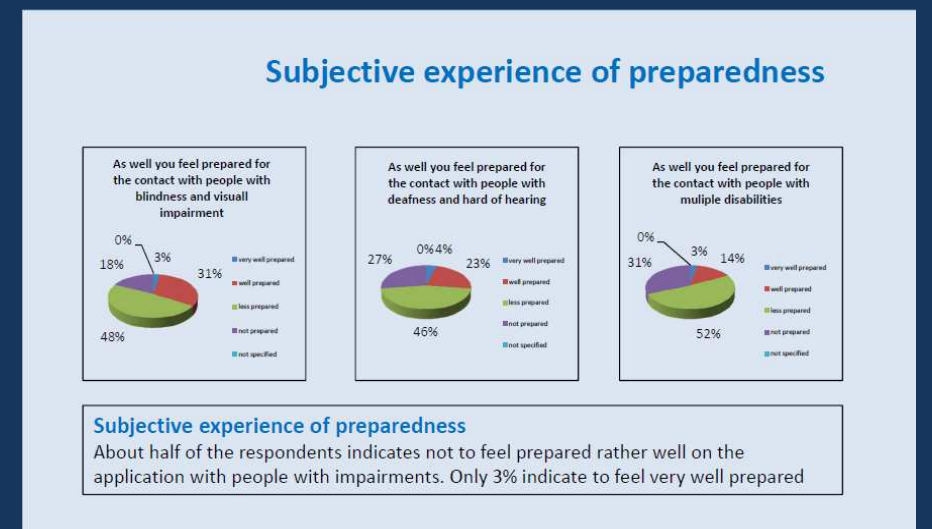
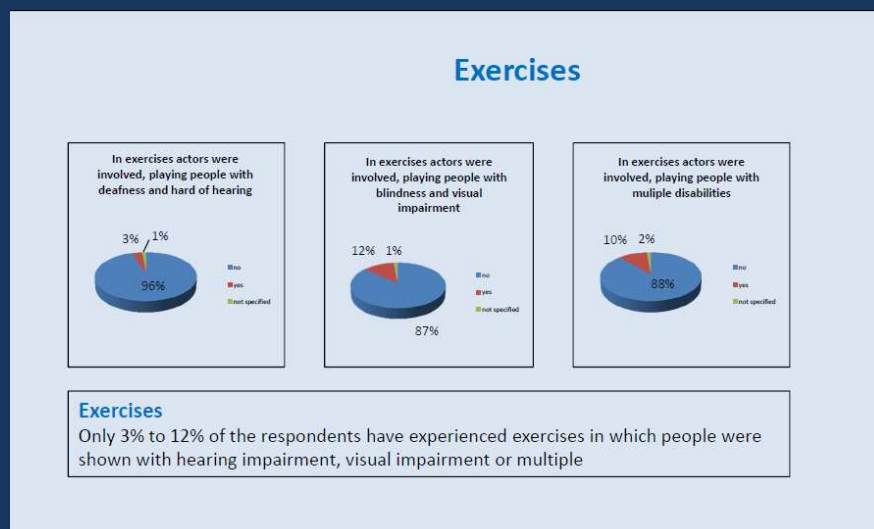
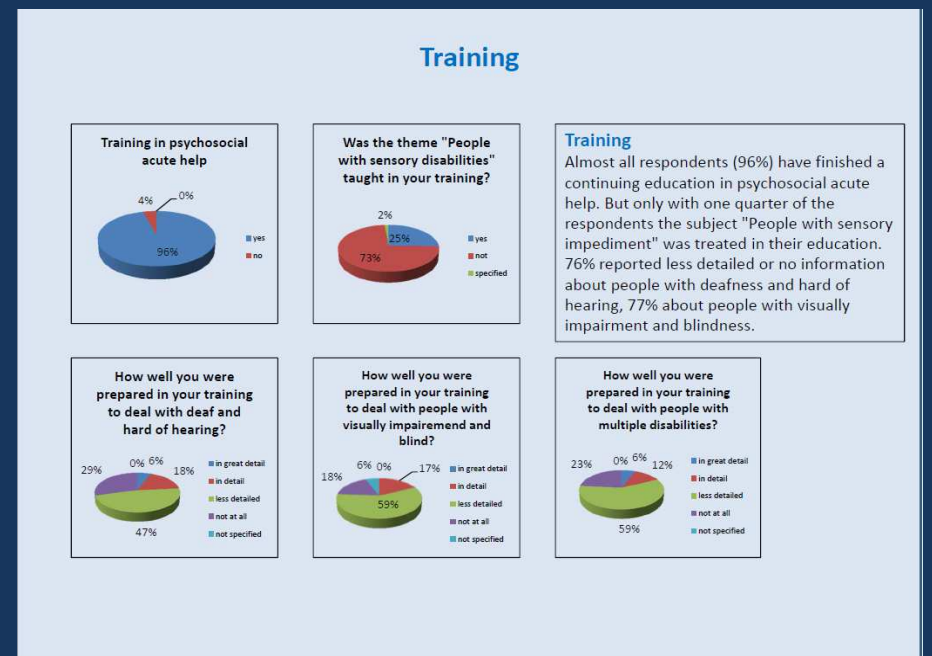
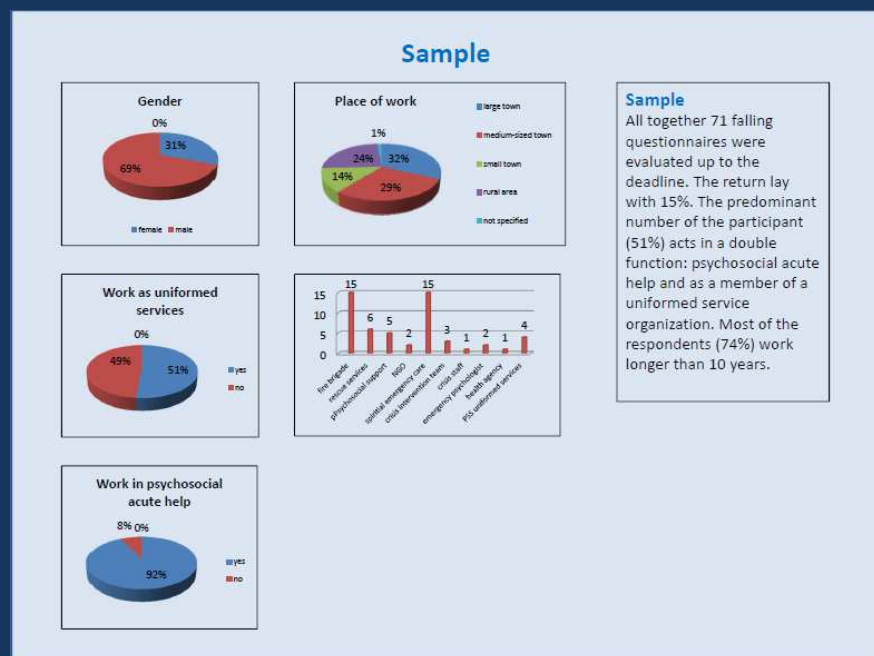
European Network for Psychosocial Crisis Management Assisting Disabled in Case of Disaster (EUNAD) Survey to experiences in fire brigade, rescue services, THW and psychosocial emergency care

Claudia Schedlich & Gisela Zurek

The project EUNAD aims toward the implementation and preparation of EU human rights-related assistance programs for disabled survivors of disasters on the basis of existing guidelines, e.g. the products of former European projects EUTOPA and EUTOPA IP (IMPACT Guidelines for Early Intervention and IMPACT guidelines for uniformed services, Target Group Intervention Program –TGIP- for large-scale damage situations). The project EUNAD focus on Psychosocial Crisis Management for people with sensory impairment - visually impaired and blind people as well as people with hard of hearing and deafness. In the scientific studies within the project EUNAD the Federal Office of Civil Protection and Disaster Assistance, section Psychosocial Crisis Management, undertook the task to find out:

- in what extend suppliers of psychosocial acute help come into contact to people with visual and hearing impairment in their missions,
- in what extend the special needs of people with sensory impairment were part of their education,
- how well they feel prepared to fulfil this tasks and
- which needs and demands they see for future actions

A main supplier of psychosocial acute help in Germany is the predominantly voluntary emergency spiritual welfare. A questionnaire was developed and dispatched to almost all emergency priests in Germany over their co-ordinators in the federal states.



- ### Examples for Recommendations and needs
- The subject should absolutely be a component of the education
 - Objectives of the training tools are e.g. improvement of the understanding, knowledge about the specific needs and demands, sensitization, diminishing uncertainties
 - Contents of the trainings should be e.g. possibilities to communicate, learning how to guide and offer orientation
 - The disabled people should be integrated in the trainings as lecturer or as actors in exercises

